

**2025-2026**

**UT Dallas NSBE**  
***Partnership Package***



## TABLE OF CONTENTS

<b>What is NSBE?</b>	<b>4</b>
<b>Meet the Executive Board</b>	<b>5</b>
<b>A Glimpse at Our Community</b>	<b>6</b>
<b>The Three Pillars: Academic Excellence</b>	<b>7</b>
<b>The Three Pillars: Professional Development</b>	<b>8</b>
<b>The Three Pillars: Community Outreach</b>	<b>9</b>
<b>Why Sponsor Us?</b>	<b>10</b>
<b>Sponsorship Opportunities</b>	<b>11</b>
<b>FAQs and Contact Information</b>	<b>12</b>







# Letter from the President

**Dear Future Partner,**

Hi there! I'm Samerawet Gorfe, and I have the absolute honor of serving as the President of the National Society of Black Engineers (NSBE) at UT Dallas for the 2025–2026 academic year. I'm so excited you're reading this, and I genuinely want to thank you for considering our Corporate Sponsorship Packet. Your interest in what we're building means the world to us—and honestly, it means the world to me.

This packet was thoughtfully designed to give you a full picture of who we are, what we're doing, and how your support can make an incredible impact. Inside, you'll find detailed ways you can partner with us—from sponsoring our travel to national conferences, to supporting scholarships, to hosting hands-on workshops and career-building events. This is more than a sponsorship—it's a chance to shape the future of engineering, side by side with us.

NSBE has been my home away from home. From managing a \$30,000 travel budget and coordinating logistics for over 150 members, to shaping marketing strategy across a 22,000-member region, I've seen how much power there is in community. When people pour into this org, we rise. We don't just show up—we show out. And it's because of forward-thinking, values-driven partners like you.

This year, our mission is simple: go bigger and bolder. We're doubling down on excellence, access, and opportunity. With your help, we'll continue creating spaces where Black excellence thrives unapologetically in tech and engineering.

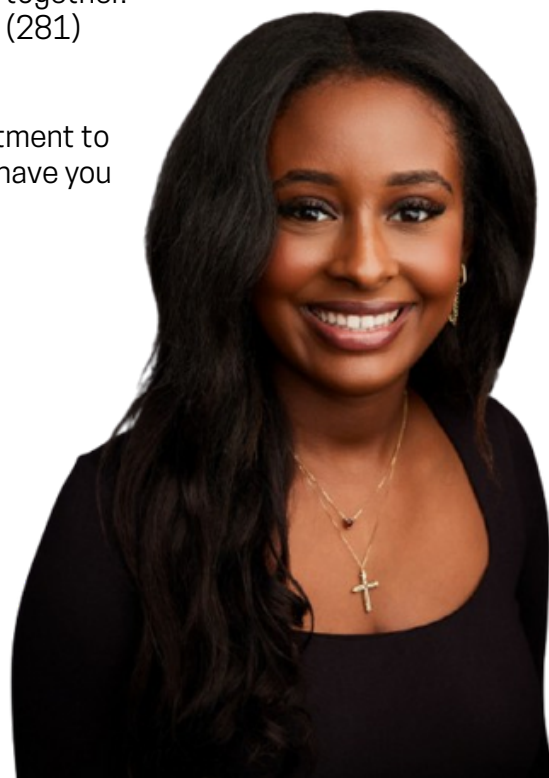
And what do you gain as a partner? You're not just slapping your logo on a flyer—you're tapping into a pipeline of brilliant, driven, and creative talent. You'll have direct access to engineers who code, lead, pitch, automate, design, problem-solve—and do it all with heart. You get to say you invested in the next generation of changemakers who aren't waiting for the door to open—we're building new doors entirely.

I'd love to connect and talk about how we can build something impactful together. Please don't hesitate to reach out to me at [samgorfeedu@gmail.com](mailto:samgorfeedu@gmail.com) or (281) 546-1538 if you have any questions or ideas.

Thank you again for your time, your belief in our mission, and your commitment to equity in tech. We're excited for what's ahead—and we'd be honored to have you with us on this journey.

Let's make it happen. Go Comets!

Warmly,  
Samerawet Gorfe  
President 2025–2026, National Society of Black Engineers  
University of Texas at Dallas  
[samgorfeedu@gmail.com](mailto:samgorfeedu@gmail.com) | 2815461538



# What Is NSBE?



A beacon of excellence, the National Society of Black Engineers (NSBE) stands as one of the largest student-governed organizations based in the U.S. Founded in 1975, NSBE champions the dreams and ambitions of collegiate and pre-collegiate students, as well as technical professionals, in engineering and technology fields. Boasting more than 700 chapters and a membership exceeding 24,000 around the globe, NSBE advances a critical mission: “to increase the number of culturally responsible Black Engineers who excel academically, succeed professionally, and positively impact the community.”

With a legacy spanning 50+ years, NSBE has birthed countless businesses, empowered corporate leaders, moved multitudes of engineers to graduation, and enriched STEM education for hundreds of thousands of K–12 students worldwide. In essence, NSBE members, chapters, and supporters are fervently committed to shaping a brighter future where Black excellence reigns supreme.

## Our Vision...

We envision a world in which engineering is a mainstream word in homes and communities of color, and all Black students can envision themselves as engineers. In this world, Black people exceed parity in entering engineering fields, earning degrees, and succeeding professionally.



## Mission Statement

*“To increase the number of culturally responsible Black Engineers who excel academically, succeed professionally, and positively impact the community.”*



# MEET THE TEAM



**Samerawet Gorfe**  
President  
Computer Science '26



**Jaiden Ball**  
Vice President  
Software Engineering '27



**Victoria Nwosu**  
Treasurer  
Mechanical Engr '26



**Tolulope Allen-Taylor**  
Co-Finance Chair  
Computer IS&T '27



**Alejandro Appio-Riley**  
Co-Finance Chair  
Computer Science '27

# MEET THE EXECUTIVE BOARD

**Oluwatamilore Oni**

Fundraising Chair  
Mechanical Engineering ('26)

**Leila Igwegbe**

Programs Chair  
Computer Science ('27)

**Blessing Ogunfowora**

Secretary  
Computer Science ('26)

**Olawale Ogunbanwo**

Parliamentarian  
Computer Science ('25)

**Caidin Albury**

Membership Chair  
Mechanical Engineering ('28)

**Inioluwa Abioye**

Senator  
Mechanical Engineering ('28)

**Sami Yusuf**

Academic Excellence Chair  
Information Technology Systems ('25)

**Nicole Eke**

Conference Planning Chair  
Computer Science ('26)

**Emeka Ohumaegbulem**

Pre-college Initiative Chair  
Biomedical Engineering ('27)

**Sowanate Amachree**

Mentorship Chair  
Mechanical Engineering ('26)

**Nykaela Burks**

Technology Chair  
Computer Science ('27)

**Laura Mullings**

Telecommunications Chair  
Computer Science ('25)

**Hajar Abdulkadir**

Publications Chair  
C.I.S Technology ('27)

**Chioma Ukaegbu**

Content Chair  
Biomedical Engineering ('28)

**Noha Markose**

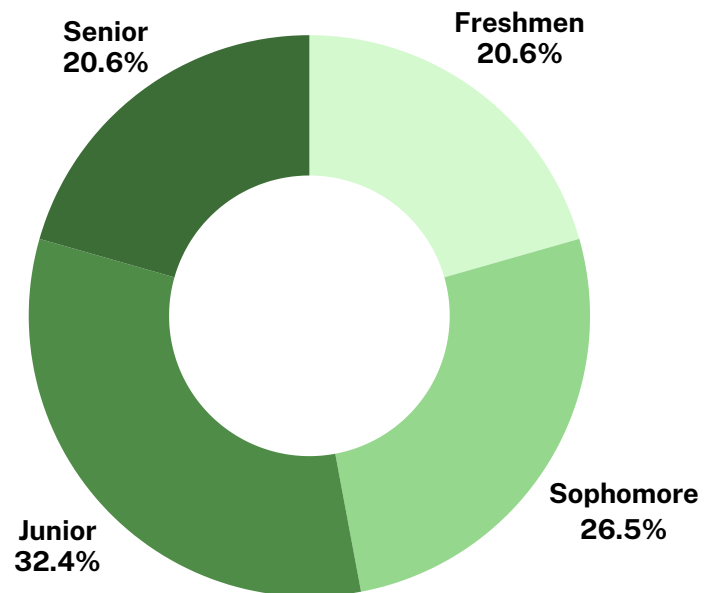
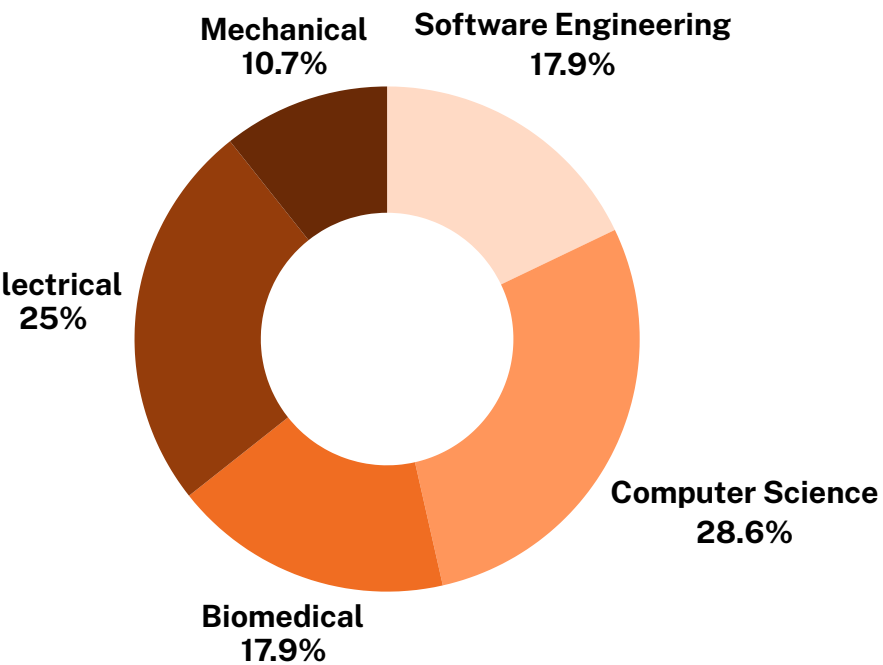
Historian  
C.I.S Technology ('27)

**Sally Duru**

Telecommunications Intern  
Computer Engineering ('28)



# A GLIMPSE AT OUR COMMUNITY



## Demographics:

We currently have **90+ active members**, with:

- 30% of our membership are working as interns in the professional workforce during the summer of 2025.
- Over 50% are paid members this past academic year
- 50+ members securing **internships or full-time roles**

## THE THREE PILLARS

### Academic Excellence

Success for an engineer ultimately starts within the classroom, and UT Dallas NSBE aims to support its members through weekly study nights and mentorship programs geared towards creating a space for peer-led learning.



### STUDY NIGHTS

Our study nights are hosted weekly in our open labs on campus. Members are encouraged to drop in and seek help from any of their peers who might have a better understanding of a given subject area. We have also been able to improve our local chapter community significantly through this endeavor.



### MENTORSHIP PROGRAMS

Our chapter thrives on the passage of knowledge from those who have come before us. That is why we have made it our priority to match members with upperclassmen who are willing to share and guide students throughout the year. We employ a family model, where we typically assign 2 or 3 students to a mentor. This has proven to be highly effective when trying to bring our members together to collaborate.





## THE THREE PILLARS

### Professional Development

Preparing members for life beyond the classroom is a cornerstone of our mission at UT Dallas NSBE. We focus on equipping students with the tools, skills, and exposure necessary to excel in professional environments. Through company info sessions, resume workshops, mock interviews, and conference preparation, we empower our members to become competitive candidates in today's workforce. Our goal is to ensure that every member is confident in their abilities and ready to seize opportunities in their chosen field.



### General Body Meetings

Our GBMs serve as a consistent touchpoint for professional growth. Each meeting is designed to deliver valuable insight on career readiness topics, including time management, technical interview prep, and networking strategies. These sessions also provide a platform for students to connect with peers, alumni, and professionals in a relaxed yet purposeful setting.

### National + Regional Conventions

NSBE's regional and national conventions are vital to our members' professional development. Attendees engage with top-tier companies, attend career-boosting workshops, and participate in one of the largest career fairs for Black engineers. UT Dallas NSBE proudly prepares and sponsors students to attend these conventions, ensuring they make the most of these high-impact opportunities.



### Workshops

Throughout the semester, we host targeted workshops focused on sharpening career-essential skills. From resume building and LinkedIn optimization to elevator pitch crafting and technical project reviews, these sessions are led by professionals and alumni who know what employers are looking for. Each workshop is tailored to help members stand out in a competitive job market.

## THE THREE PILLARS

### Community Engagement

UT Dallas NSBE believes in giving back and uplifting those around us. Our community outreach efforts are designed to inspire, educate, and engage local youth while reinforcing our chapter's values of service, leadership, and representation. Through fun, educational, and interactive events, we aim to leave a lasting impact beyond our campus.



#### Beyblade Tournament

Volunteering at local Beyblade tournaments has given our members a unique way to engage with younger students in a hands-on, energetic environment. From assisting with setting up to coordinating matches, our volunteers help create a fun and organized experience while encouraging creativity, focus, and critical thinking — skills that connect naturally to STEM and engineering.

#### Pathway to College

Our chapter partnered with Pathway to College, an organization focused on equipping high school students from underrepresented backgrounds with the resources and support needed to pursue higher education. Our members volunteered their time to speak on student panels, assist with workshops, and lead STEM-focused activities designed to spark interest in engineering and technology.



#### African American Academic Bowl

As part of our outreach efforts, our chapter participated in the African American Bowl, a Dallas-based event that highlights the academic and athletic achievements of Black youth. Our members served as volunteers throughout the day, assisting with event coordination and engaging with students and families about opportunities in STEM. The event provided a unique platform to connect with the community, promote higher education, and encourage young students to explore careers in engineering and technology.



## WHY SPONSOR US?

### SUPPORT MEANINGFUL IMPACT

Your sponsorships help make our programs possible. From professional development and mentorship to community outreach and STEM exposure for local youth. Every dollar you contribute supports initiatives that extend far beyond campus. With your help, we can provide our members with access to resources, networking opportunities, and national conferences that directly impact their academic and career success.

### ACCESS A DIVERSE, CAREER-READY TALENT PIPELINE

NSBE UTD is home to a dynamic group of engineering students pursuing degrees in computer science, mechanical engineering, electrical engineering, computer science, and other STEM disciplines. Our members are not only academically driven, but they're also actively building leadership, technical, and professional skills through workshops, conferences, and chapter involvement. By sponsoring our chapter, you gain early access to a motivated and diverse group of future engineers, positioning your company as a top choice for internships and full-time opportunities.

### AMPLIFY YOUR COMMITMENT TO DIVERSITY AND INCLUSION

Sponsoring NSBE UTD demonstrates your company's commitment to building a more inclusive future in STEM. We offer visibility through chapter events, marketing materials, social media, and conference recognition. This partnership allows your organization to stand out not just as an employer but as a community-focused leader dedicated to equity, opportunity, and long-term change.

## SPONSORSHIP OPPORTUNITIES



### BRONZE (\$500)

- Featured shout-out at one of our General Body Meetings or technical workshops
- Company logo proudly displayed on our chapter website
- Exclusive invite to select networking events with top student talent

### SILVER (\$1500) *\*\* Includes all perks of Bronze Tier Partnership\*\**

- Opportunity to present or host a General Body Meeting or technical workshop
- One-semester access to the UTD NSBE resume book
- Option to participate in our mentorship program as a guest speaker or panelist
- Featured recognition in our chapter newsletter or LinkedIn spotlight post

### GOLD (\$3500) *\*\* Includes all perks of Bronze & Silver Tier Partnership\*\**

- Access to the NSBE UTD Resume book for **1 academic year**
- Job/Internship posting shared with members
- Scholarship under the company name
- Company logo on **ALL** NSBE UTD merch
- Host **1** additional event of your choosing
- **Priority** GBM/Workshop presentation above all the tier
- Luncheon/Dinner with NSBE Chapter Executive Officers

**RECOMMENDED  
TIER**



# FAQs and Contact Information

## 1. **How do we start the sponsorship process?**

- Reach out to our Finance Team at [utdnsbe@outlook.com](mailto:utdnsbe@outlook.com). Once we connect, we'll send out a sponsorship form and walk you through the next steps based on your selected tier.
- More contact information can be found at the end of the package.

## 2. **Can we sponsor if we are not local to Dallas?**

- Absolutely! Many of our partners host virtual events or participate in a hybrid format. We're flexible and committed to creating access no matter where your team is based.

## 3. **Is there flexibility to combine or adjust tiers?**

- If you have a unique idea or want to create a custom partnership, we're open to it. Our goal is to build something valuable for both your team and members.

## 4. **How are sponsorship funds managed?**

- All funds go directly to our chapter's university-managed account and are used for approved programming events and member support. We're transparent with how funds are allocated and can provide an expense breakdown if needed.

## Contact Us Here:

Email : [utdnsbe@outlook.com](mailto:utdnsbe@outlook.com)

Website: <https://utdnsbe.vercel.app/>

LinkedIn: <https://www.linkedin.com/company/nsbe-utd/>

Instagram: @utdnsbe



**THANK YOU FOR YOUR SUPPORT  
WE LOOK FORWARD TO WORKING  
WITH YOU!**

